

SHARE HOUSE BONBON OMIYA



Point

- Within walking distance to school
- Spacious bedroom
- Active interaction with residents



Expenses

Initial Fee: ¥33,000(including cleaning fee)
 Rent: ¥45,000~90,000/m (Private room)
 Utility Fee: ¥10,000~20,000/m



Facilities

<Common> Kitchen, Living Room, Lavatory, Shower Room, Washing Machine(free), Drying Machine(charged), TV, Refrigerator, Rice Cooker, Microwave, Wi-Fi

<Room> Bed, Bedding Set, Air Conditioner, Desk, Chair, Closet



Number of Rooms 19 Rooms

Private Room: 15 rooms (7~16.1㎡),
 1 room(16.4㎡), 2 rooms (22.9㎡),
 1 room (25㎡)

Access

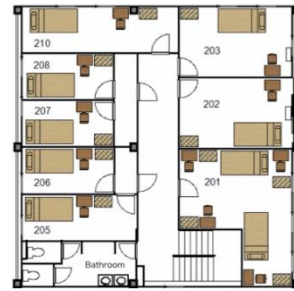
To School : 15 min on foot

The nearest station(JR Omiya Sta.): 15 min on foot
 《From the station》

To Shinjuku: 35 min (One way ¥480)

To Shibuya: 40 min (One way ¥570)

To Akihabara: 40 min (One way ¥480)



2F



1F



3F



4F



Surrounding Environment

Convenience Store: 30 sec on foot

Supermarket: 2 min on foot

Hospital: 2 min on foot

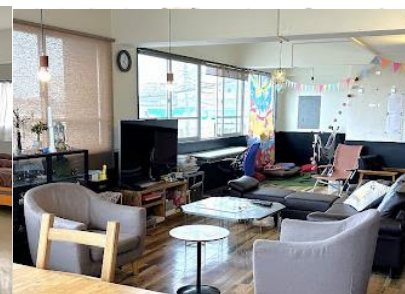
Post Office: 6 min on foot



Private room



Largest private room



Lounge



Kitchen



Laundry



Shower room