

BONBON STAY OMIYA



Point

- Near the downtown area Omiya
- Active interactions among residents
- Within walking distance to school



Expenses

Initial Fee: ¥31,000 (at the time of entrance)
 Rent: ¥35,000/m (Room for two)
 ¥50,000/m (Private room Type-A)
 or ¥48,000/m (Private room Type-B)
 Utility Fee: Included in rent

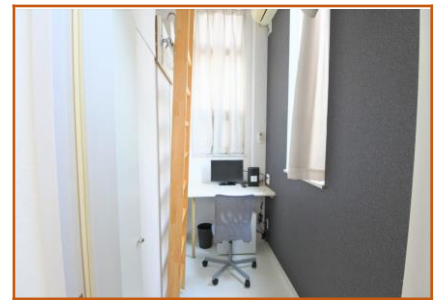


Facilities

<Common> Lounge, Lavatory, Wash Basin, Shower room, Washing machine (¥200), Dryer(¥100/30min.), Large screen TV, Rice cooker, Microwave, Wi-Fi
 <Room> Bed (or Loft), Bedding, Air conditioner, Desk, Chair, Mini Refrigerator, Mini TV. Closet, Wi-Fi



Private room Type-A



Private room Type-B



Number of rooms 22 rooms (Private room 4.9m²x 20 rooms, Double room 9.7m²x 1 room)

Access

To school 15 min. on foot
 Nearest station(JR Omiya Sta. 10 min. on foot
 《From the station》

To Shinjuku: 30 min. (One way ¥480)
 To Shibuya: 40 min. (One way ¥570)
 To Akihabara: 40 min. (One way ¥480)



Surrounding Environment

Convenience store: one min. on foot
 Supermarket: 15 min. on foot
 Clinic: 10 min. on foot



Double room



Lounge



Kitchen



Kitchen



Laundry



Sorting trash cans