

# HIPPO HOUSE KITA-URAWA



## Point

- Near the station and shopping street
- Spacious bedroom
- Satisfying common space



## Expenses

Initial Fee: ¥0 (Need to stay here for more than 6 months)  
 Rent: ¥44,000/m for single room,  
 ¥25,000/m for twin room  
 Utility Fee: ¥10,000/m



## Facilities

<Common> Kitchen, Living Room, Lavatory, Shower Room, Washing Machine(charged), Drying Machine(charged), Iron, Wired Lan Connection  
 <Room> Bed, Bedding, Refrigerator, Air Conditioner, Desk, Chair, Storage space



## Number of Rooms

Private Room: 26 rooms(11.6~12.7m<sup>2</sup>)

1F



2F



3F



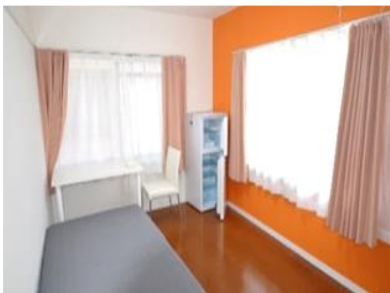
## Access

To School: 20min by bicycle, or by train and on foot  
 Nearest station(JR Kita Urawa Sta.): 4 min on foot  
 《From the station》  
 To Shinjuku: 40min (One way ¥400)  
 To Shibuya: 45min (One way ¥480)  
 To Akihabara: 40min (One way ¥400)



## Surrounding Environment

Convenience Store: 2 min on foot  
 Supermarket: 15 min on foot  
 Hospital: 2 min on foot  
 Post Office: 10 min on foot



Private room



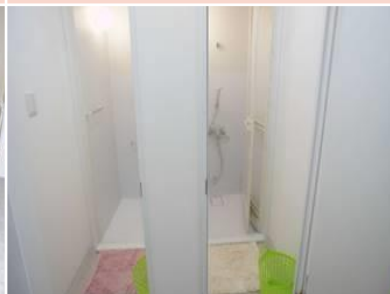
Living room



Kitchen



Entrance



Shower room



Laundry