

HORINOUCHI Dormitory



Point

- Quiet residential area
- Greenery spacious park in the neighborhood
- No transportation fee to school

Expenses



- Entrance Fee ¥40,000
- Deposit ¥20,000 (1 year)
- Rent ¥22,000/m
- Utility Fee Actual Expenses (Approx. ¥ 6,000/m)



Facilities

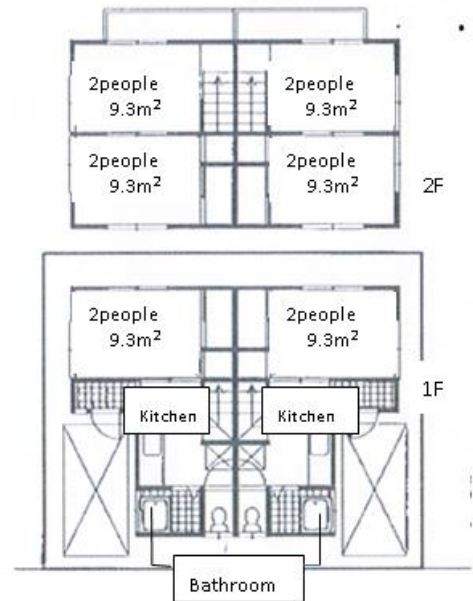
- <Common> Kitchen, Bathroom, Lavatory, Microwave, Rice Cooker, Refrigerator, Washing Machine, Vacuum Cleaner, Wi-Fi
- <Room> Air Conditioner, Desk and chair (or Table only), Futon bedding



- Capacity** 12 people (6 people x 2 unit)
Room for two (9.3m²) x 3 rooms

Access

- To school: Approx. 20 min by bicycle
 Nearest station (JR Omiya Sta.): 15 min by bicycle
 《From the station》
 To Shinjuku Approx. 35 min (One way ¥480)
 To Shibuya Approx. 40 min (One way ¥570)
 To Akihabara Approx. 40 min (One way ¥480)



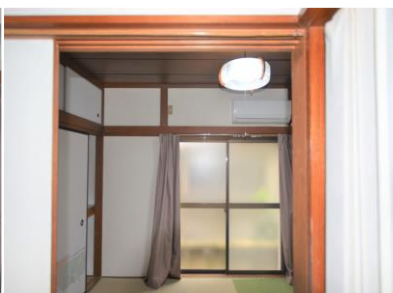
Surrounding Environment



- Convenience Store: 10 min on foot
- Supermarket: 13 min on foot
- Post Office 8 min by bicycle
- Hospital: 12 min on foot



Room for two①



Room for two②



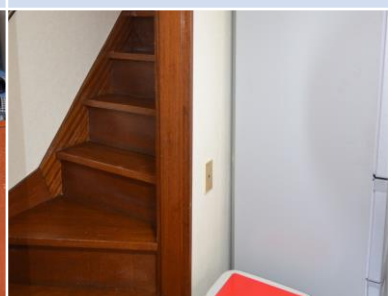
Room for two③



Kitchen



Electric Appliances



Staires