

J&F House Musashi Urawa

Point

- Modern interior and exterior
- Multinational residents
- House manager is available in the Share House

Expenses

Initial Fee: ¥30,000 + First rent(Utility fee included)
 Rent: ¥31,000~37,000/m
 Utility Fee: ¥15,000/m

Facilities

<Common> Kitchen, Living Room, Lavatory, Shower Room, Washing Machine(charged), Drying Machine(charged), Wi-Fi
 <Room> Bed, Bedding Set, Small Refrigerator, Air Conditioner, Desk, Chair, Closet

Number of Rooms

Private Room: 80 rooms (7.5㎡)



Access

To School: 35 min by train and on foot
 (1month train pass ¥5,270)

Transportation: 25min on foot to JR Urawa Sta.

《From the station》

To Shinjuku: 35min (One way ¥400)

To Shibuya: 40min (One way ¥480)

To Akihabara: 40min (One way ¥400)



Surrounding Environment

Convenience Store: 6 min on foot

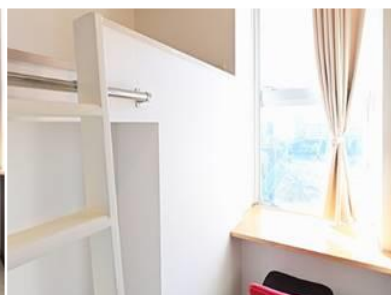
Supermarket: 10 min on foot

Hospital: 2 min on foot

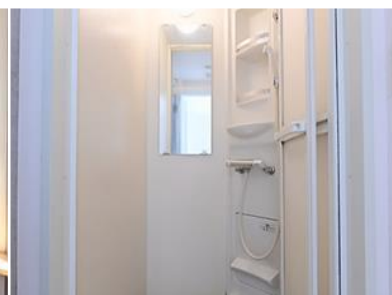
Post Office: 7 min on foot



Private room



Private room



Shower room



Common space



Laundry



Kitchen