

J&F HOUSE Warabi



Point

- Many events are held
- House manager resides here
- Take part in local events



Expenses

Deposit: ¥20,000 (adjust when leaving)
 Rent: ¥22,000~36,000/m
 Utility Fee: ¥4,000~11,000/m



Facilities

<Common> Kitchen, Living Room, Lavatory, Shower Room, Washing Machine(not free), Drying Machine(not free), Wired Lan connection, TV
 <Private Room> Bed, Bedding Set, Small Refrigerator, Air Conditioner, Desk, Chair, Closet

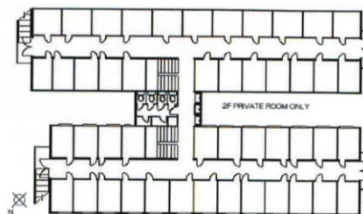
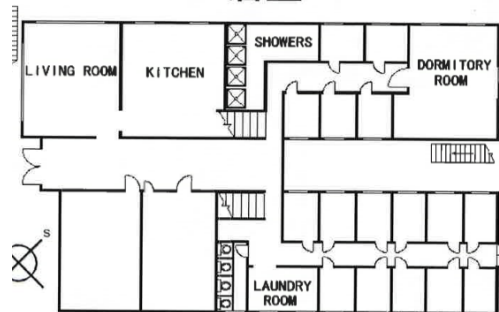


Number of Rooms 94 rooms
 Private Room: 84 rooms(4.65m²)
 Double Room: 9 rooms(10.0m²)
 Room for twelve: 1 room(31m²) ※Men Only

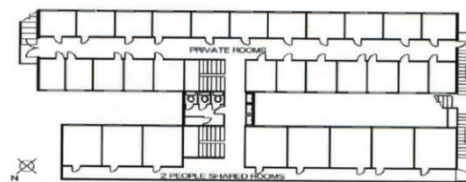
Access

To School: 40 min by train and on foot
 (1month train pass ¥5,270)
 Nearest station(JR Warabi Sta.): 15min on foot
From the station
 To Shinjuku: 30min (One way ¥310)
 To Shibuya: 35min (One way ¥400)
 To Akihabara: 30min (One way ¥310)

1F 居室



2F、3F 居室



Surrounding Environment

Convenient Store: 1 min on foot
 Supermarket: 7 min on foot
 Hospital: 5 min on foot
 Post Office: 8 min on foot



Private Room



Living Room



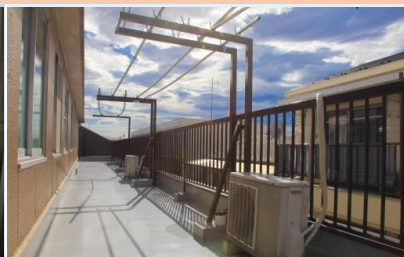
Shower Room



Kitchen



Laundry



Rooftop