

KAMIKIZAKI Dormitory



Point

- Transportation expense is free
- Refrigerator in each room
- Good access to supermarket and station



Expenses

- Initial Fee: ¥40,000
 Deposit: ¥20,000 (1 year)
 Rent: ¥38,000/m
 Utility Fee: Actual expense (Approx. ¥8,000/m)

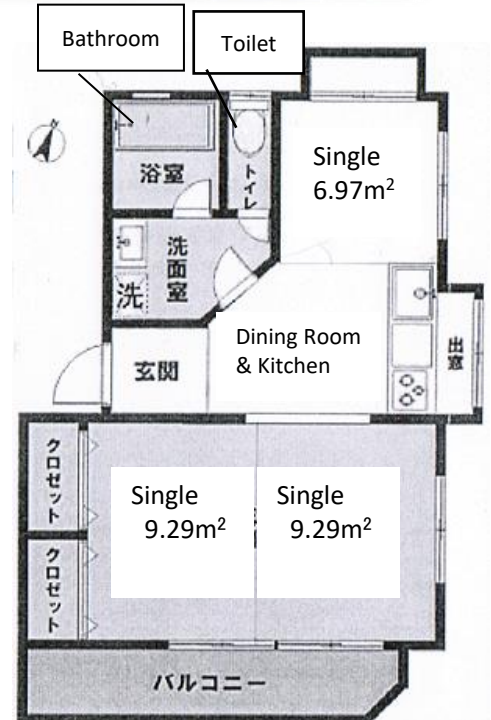


Facilities

- <Common> Dining Kitchen, Bathroom, Lavatory, Wash Basin, Microwave, Rice Cooker, Washing Machine, Vacuum Cleaner, Wi-Fi
 <Private Room> Bed, Bedding Set, Air Conditioner, Refrigerator, Desk and Chair(or a table only)



Capacity 6 people (3 people x2 apartments / Single Room(6.98m²) x2 rooms, Single Room(9.29m²) x4 rooms)



Access

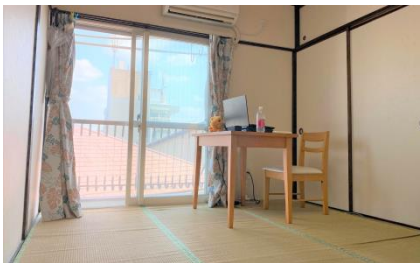
To School: 15 min by bicycle
 Nearest station(JR Yono Sta.): 9min on foot
From the station

- To Shinjuku: 40min (One way ¥480)
- To Shibuya: 45min (One way ¥480)
- To Akihabara: 40min (One way ¥480)

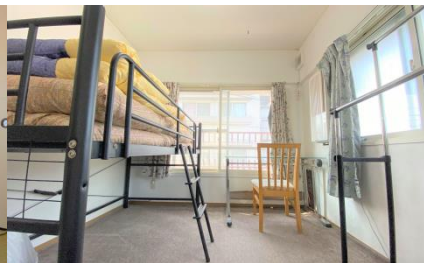


Surrounding Environment

- Convenience Store: 1 min on foot
- Supermarket: 4 min on foot
- Hospital: 3 min on foot
- Post Office: 4 min on foot



Single Room①



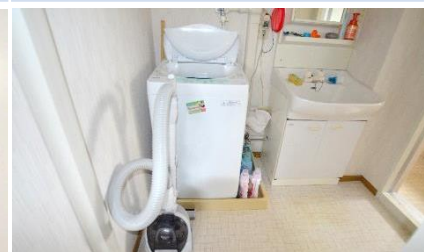
Single Room②



Single Room③



Dining room



Laundry



Kitchen