

KAMIYAMAGUCHI Dormitory



Point

- Spacious Japanese style house
 - Quiet residential area
- Convenient for shopping at a big shopping mall on the way to school



Expenses

- Entrance Fee ¥40,000
- Deposit ¥20,000 (1 year)
- Rent ¥25,000 & 27,000/m
- Utility fee Actual expense (Approx. ¥ 6,000/m)



Facilities

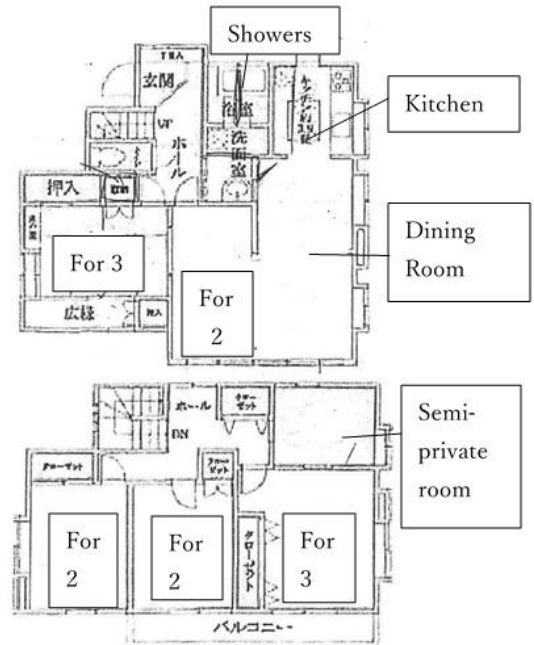
<Common> Dining Kitchen, Shower Room, Lavatory, Wash Basin, Microwave, Refrigerator, Rice Cooker, Washing Machine, Vacuum Cleaner, Wi-Fi

<Room> Air conditioner, Desk and chair (or Table only), Futon bedding



Capacity 13 people

- Semi-private room (5.74m²) x 1 room
- Room for two (9.46m²) x 2 rooms
- Room for two (7.75 m²) x 1 room
- Room for three (11.94m²) x 1 room
- Room for three (12.71m²) x 1 room



Access to school

- To school: Approx. 15 min by bicycle
- Nearest station (JR Saitama Shintoshin Sta.): Approx. 12 min by bicycle

《From the station》

- To Shinjuku Approx. 35 min (One way ¥480)
- To Shibuya Approx. 40 min (One way ¥480)
- To Akihabara Approx. 35 min (One way ¥480)



Surrounding Environment

- Convenience Store: 6 min by bicycle
- Supermarket: 6 min by bicycle
- Post Office: 7 min. by bicycle
- Clinic: 8 min by bicycle



Room for two①



Room for two②



Room for three



Kitchen



Dining Room



Laundry