

吉敷503寮

KISHIKI503 Dormitory



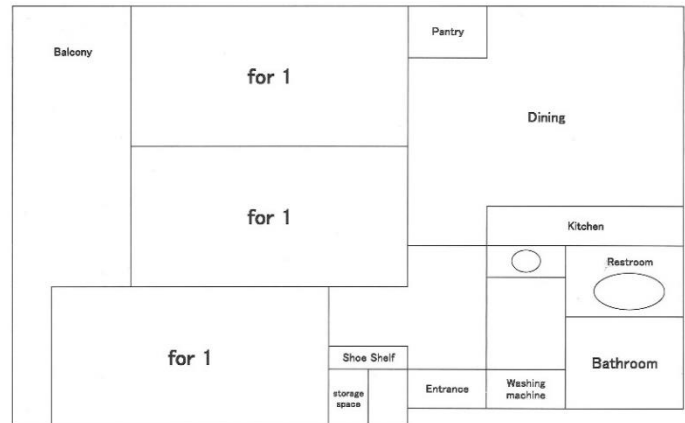
Point

- 10 min on foot to school
- Refrigerator in each room
- Renovated in 2023



Expenses

Initial Fee: ¥70,000
Rent: ¥42,000/month
Utility Fee: ¥8,000/m



Facilities

<Common> Dining Kitchen, Bathroom, Lavatory, Wash Basin, Microwave, Rice Cooker, Washing Machine, Vacuum Cleaner, Wi-Fi
<Room> Bed, Bedding Set, Air Conditioner, Refrigerator, Desk and Chair



Capacity 3 people (9.29㎡ x 3 rooms)

Access

To school: 10 min on foot
Nearest school: 15 min on foot to JR Saitama Shintoshin station
《From the nearest station》
To Shinjuku 40 min (One way ¥480)
To Shibuya 45 min (One way ¥480)
To Akihabara 40 min (One way ¥480)

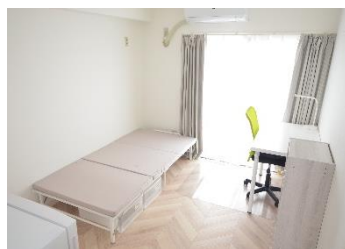


Surrounding Environment

Supermarket: 13 min on foot
Convenience store: 8 min on foot
Clinic: 6 min on foot
Post office: 8 min on foot



Room①



Room②



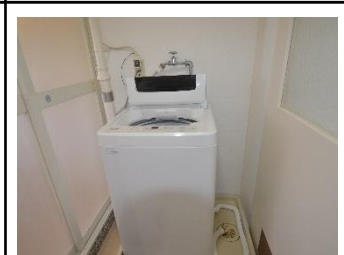
Room③



Dining room



Kitchen



Laundry