

# SHARE HOUSE BONBON OMIYA



### Point

- Within walking distance of school
- Spacious bedroom
- Active interaction with residents



### Expenses

Initial Fee: ¥27,000  
 Rent: ¥24,000~47,000/m  
 Utility Fee: ¥10,000/m



### Facilities

<Common> Kitchen, Living Room, Lavatory, Shower Room, Washing Machine(free), Drying Machine(not free), TV, Refrigerator, Rice Cooker, Microwave, Wi-Fi  
 <Private Room> Bed, Bedding Set, Air Conditioner, Desk, Chair, Closet



**Number of Rooms** 17 Rooms  
 (Private Room: 14 rooms (7~16.1㎡)  
 Double Room: 1 room(16.4㎡)  
 Room for four: 2 rooms (22.9㎡)

### Access

To School : 15 min on foot  
 To nearest station(JR Omiya Sta.): 15 min on foot  
**From the station**  
 To Shinjuku: 35 min (One way ¥480)  
 To Shibuya: 40 min (One way ¥570)  
 To Akihabara: 40 min (One way ¥480)



### Surrounding Environment

Convenience Store: 30 sec on foot  
 Supermarket: 2 min on foot  
 Hospital: 2 min on foot  
 Post Office: 6 min on foot



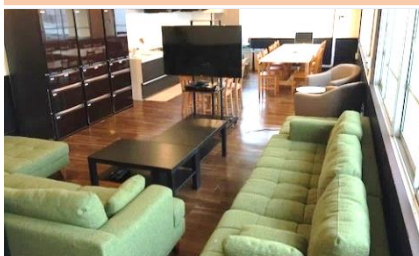
Private Room



Room for four



Lounge



Living Room



Laundry



Studying Space