

TAKAHANA

Studio Apartment Dormitory



Point

- Brand new dormitory completed in February 2020
- Shower room, lavatory and kitchen for private use
- Quiet area near the park and the shrine



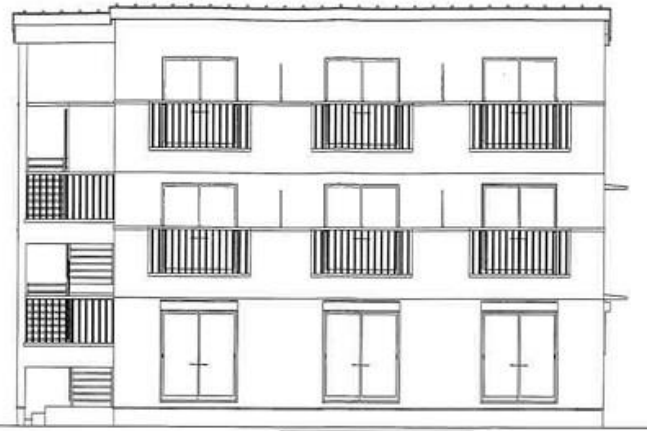
Expenses

- Initial Fee: ¥40,000
- Deposit: ¥20,000 (1 year)
- Rent: ¥55,000~60,000/m
(¥36,000/m per person for 2 people use – Room B)
- Utility Fee: Actual expense (Approx. ¥14,000/m)



Facilities

Kitchen, Lavatory, Shower Room, Refrigerator, Washing Machine, Vacuum Cleaner, Wi-Fi, Bed, Bedding Set, Air Conditioner, Desk, Chair, Hot Water Supply, Intercom



Capacity 9 people (1 person x 9 rooms/
Private Room A(11.52㎡) x 6 rooms,
Private Room B(14.31㎡) x 3 rooms)

Access

To School: 15min by bicycle
The nearest station(JR Omiya Sta.): 7min by bicycle
《From the station》
To Shinjuku: 35min (One way ¥480)
To Shibuya 40min (One way ¥570)
To Akihabara: 40min (One way ¥480)



Surrounding Environment

Convenience Store: 4 min on foot
Supermarket: 14 min on foot
Hospital: 2 min on foot
Post Office: 10 min on foot



Room A



Room A



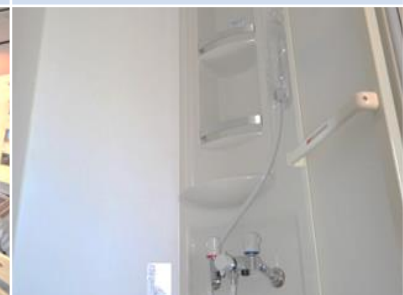
Kitchen



Room B



Room B



Shower room



Lavatory



Large closet



Balcony



Entrance



Intercom



Shoe cabinet



Stairs



View from the 3rd floor



Supermarket

Private Room A: 6 rooms

Private Room B: 3 rooms

