

# YONO HOUSE Dormitory



## Point

- Within walking distance of school
- Near station and convenient to live



## Expenses

- Initial Fee: ¥40,000
- Deposit: ¥20,000 (1 year)
- Rent: ¥34,000 ~ 39,000/m
- Utility Fee: Actual expense (¥8,000 ~ 12,000/m)



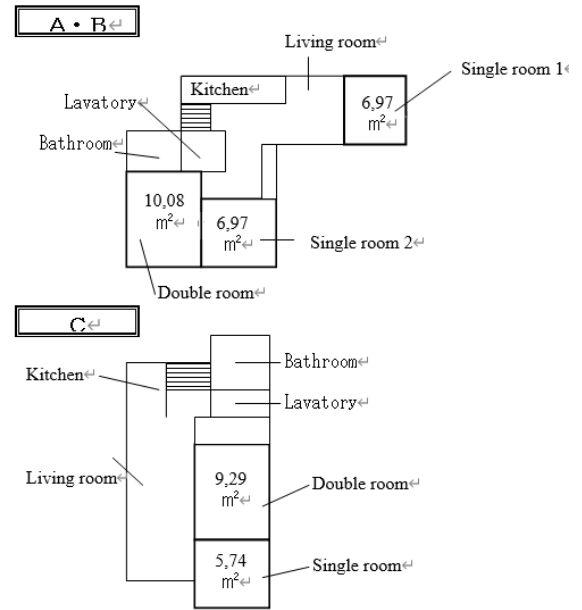
## Facilities

- <Common> Kitchen, Dining Room, Bathroom, Washing Machine, Drying Machine, Vacuum Cleaner, Wi-Fi, Refrigerator, Microwave, Rice Cooker
- <Private Room> Bed, Bedding Set, Air Conditioner, Desk, Chair



## Capacity 11 people

- Type A/B: 4 people x2 apartments/ Double Room (10.08m<sup>2</sup>) x2 room, Single Room(6.97m<sup>2</sup>) x4 rooms
- Type C: 3 people x1 apartment/ Double room(9.29 m<sup>2</sup>) x1 room, Single Room(5.74m<sup>2</sup>) x1 room



## Access

- To School: 15min on foot
- Nearest station(Kita Yono Sta.): 1min on foot
- From the station
- To Shinjuku: 35min (One way ¥480)
- To Shibuya: 40min (One way ¥480)
- To Akihabara: 50min (One way ¥480)



## Surrounding Environment

- Convenience Store: 1 min on foot
- Supermarket: 4 min on foot
- Hospital: 3 min on foot
- Post Office: 30 sec on foot



Single Room①



Single Room②



Single Room③



Living Room



Kitchen



Laundry