

YONO HOUSE Dormitory



Point

- Within walking distance to school
- Near the station and convenient to live



Expenses

- Initial Fee: ¥40,000
- Deposit: ¥20,000 (1 year)
- Rent: ¥34,000~39,000/m
- Utility Fee: Actual expense (¥8,000~12,000/m)



Facilities

- <Common> Kitchen, Dining Room, Bathroom, Washing Machine, Drying Machine, Vacuum Cleaner, Wi-Fi, Refrigerator, Microwave, Rice Cooker
- <Room> Bed, Bedding Set, Air Conditioner, Desk, Chair

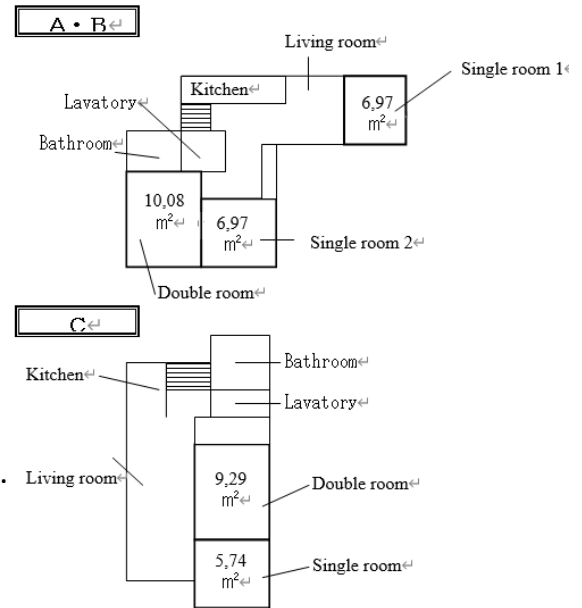


Capacity 7 people

- Type A: Double room (10.08m²) x 1 room, Single Room(6.97m²) x 2 rooms
- Type C: Double room(9.29 m²) x 1 room, Single Room(5.74 m²) x 1 room

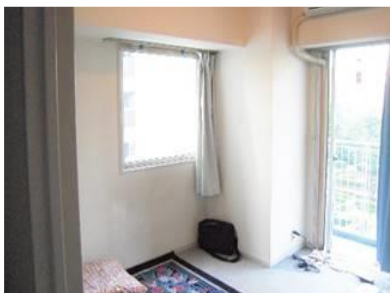
Access

- To School: 15min on foot
- Nearest station(Kita Yono Sta.): 1min on foot
- 《From the station》
- To Shinjuku: 35min (One way ¥480)
- To Shibuya: 40min (One way ¥480)
- To Akihabara: 50min (One way ¥480)

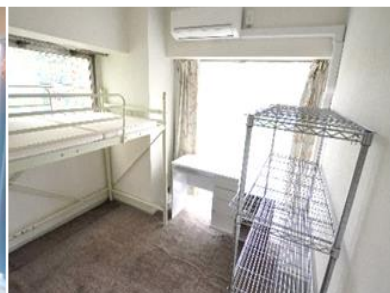


Surrounding Environment

- Convenience Store: 1 min on foot
- Supermarket: 4 min on foot
- Hospital: 3 min on foot
- Post Office: 30 sec on foot



Private room①



Private room②



Private room③



Living room



Kitchen



Laundry