

# BONBON STAY OMIYA



## Point

- Near the downtown area Omiya
- Active interactions among residents
- Within walking distance to school



## Expenses



Initial Fee: ¥33,000 (including cleaning fee)  
 Rent: ¥35,000/m (Room for two)  
 ¥50,000/m (Private room Type-A)  
 ¥49,000/m (Private room Type-B)  
 ¥55,000/m (Private room Type-C)  
 ¥35,000/m (Room for two) \*Same as Type-C

Utility Fee: Included in rent

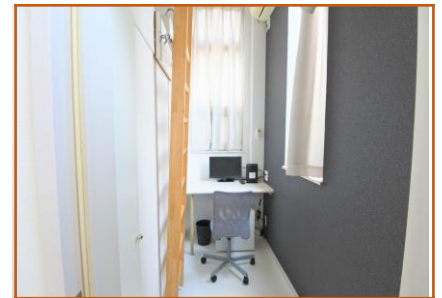


## Facilities

<Common> Lounge, Lavatory, Wash Basin, Shower room, Washing machine (¥200), Dryer(¥100/30min.), Large screen TV, Rice cooker, Microwave, Wi-Fi  
 <Room> Bed (or Loft), Bedding, Air conditioner, Desk, Chair, Mini Refrigerator, Mini TV. Closet, Wi-Fi



Private room Type-A



Private room Type-B



Number of rooms 25 rooms (Private room 7m<sup>2</sup> x 20 rooms, Double room 14m<sup>2</sup> x 5 rooms)

## Access

To school 15 min. on foot

Nearest station(JR Omiya Sta. 10 min. on foot

《From the station》

To Shinjuku: 30 min. (One way ¥480)

To Shibuya: 40 min. (One way ¥570)

To Akihabara: 40 min. (One way ¥480)



## Surrounding Environment

Convenience store: one min. on foot

Supermarket: 15 min. on foot

Clinic: 10 min. on foot



Double room/Type-C



Lounge



Kitchen



Kitchen



Laundry



Sorting trash cans